

MONTHLY MEMBERSHIP PROGRESS REPORT

LOCATION INDIA

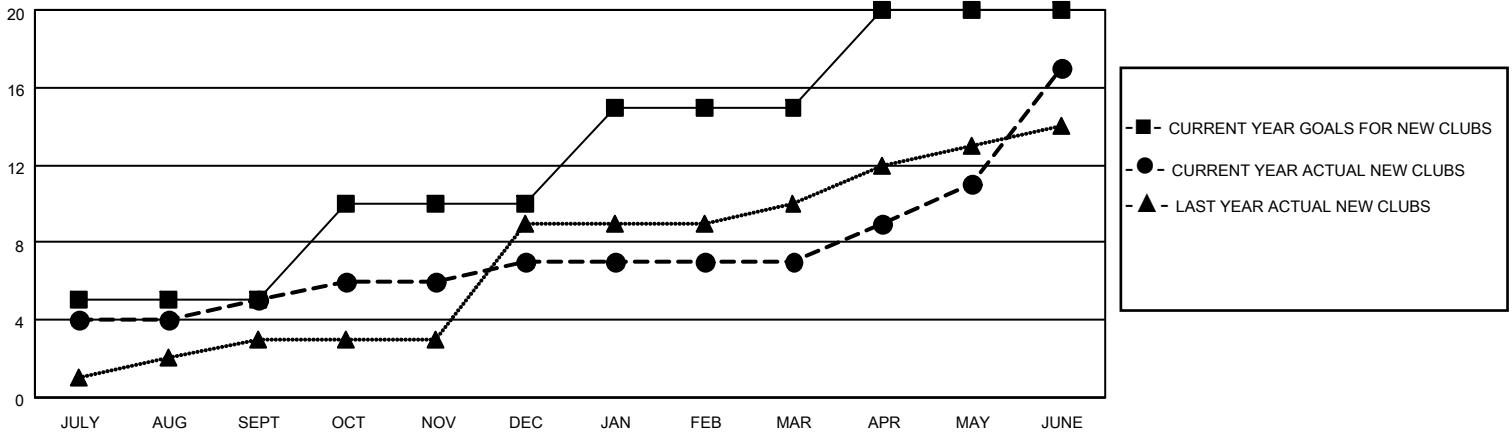
District 318 A

Results as of: 6/30/2022

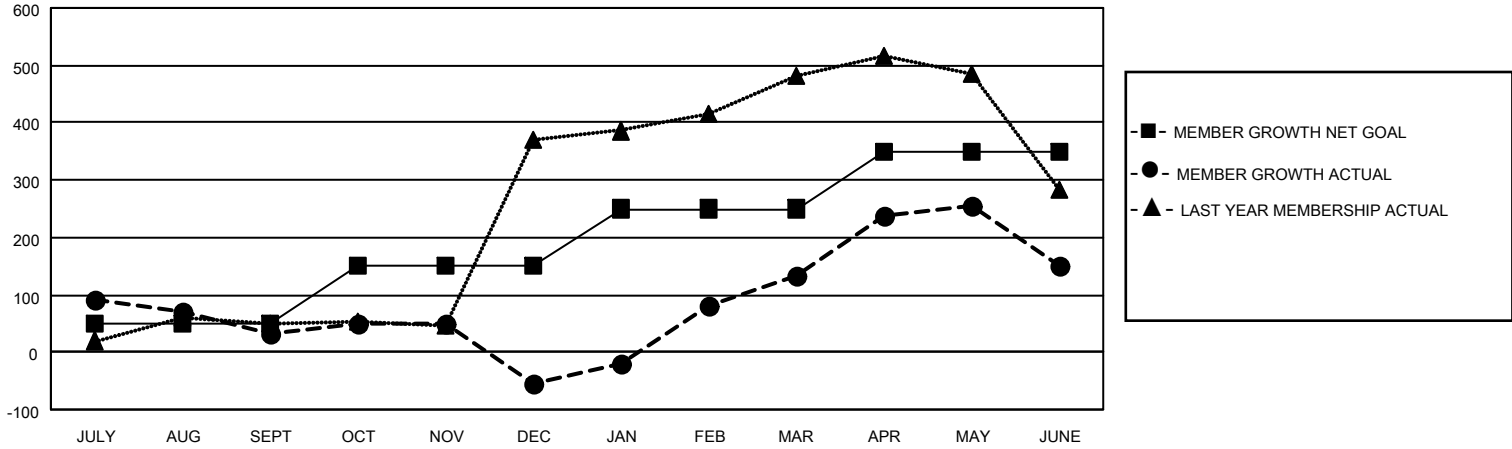
Clubs			
RESULTS FOR 2021-2022			
QUARTER	NEW CLUB GOAL	NEW CLUBS	DROPPED CLUBS
JULY/AUG/SEPT	5	5	3
OCT/NOV/DEC	5	2	4
JAN/FEB/MAR	5	0	0
APR/MAY/JUNE	5	10	3

Members			
RESULTS FOR 2021-2022			
QUARTER	MEMBER GROWTH NET GOAL	MEMBER GROWTH ACTUAL	DROPPED MEMBERS ACTUAL (including transfers)
JULY/AUG/SEPT	50	190	150
OCT/NOV/DEC	100	128	212
JAN/FEB/MAR	100	303	65
APR/MAY/JUNE	100	446	405

GOALS AND ACTUAL NEW CLUBS CUMULATIVE



GOALS AND ACTUAL MEMBERS CUMULATIVE



DROPPED CLUBS: 10

109 CLUBS OF 156 ADDED 1 OR MORE NEW MEMBERS

GENDER DISTRIBUTION

MALE	3,332 (74.93%)
FEMALE	1,114 (25.05%)
NON BINARY	1 (0.02%)
PREFER NOT TO ANSWER	0 (0.00%)

DROPPED MEMBERS

[CLICK HERE FOR CUMULATIVE MEMBERSHIP DATA](#)

DECEASED	24
CLUB CANCELLED	180
OTHER	628
TOTAL	832

TOTAL FAMILY UNIT MEMBERS 2,099

FAMILY MEMBERS PAYING HALF DUES 1,153